



**Lulu, Dixie
and Curly
have a
GOOD DAY!**



**My name is
Lulu!**

**I am
healthy!**

**quack
quack**

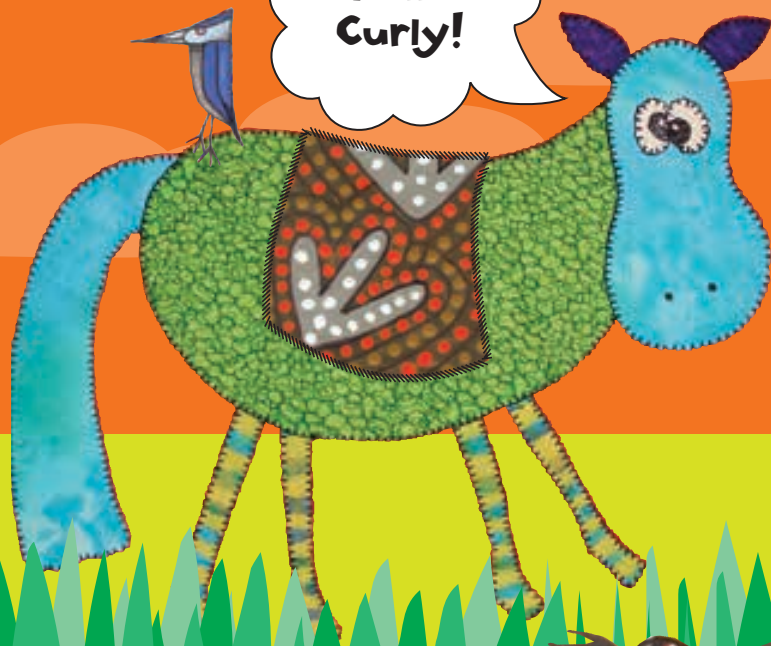


**And these are my friends
Dixie and Curly!**

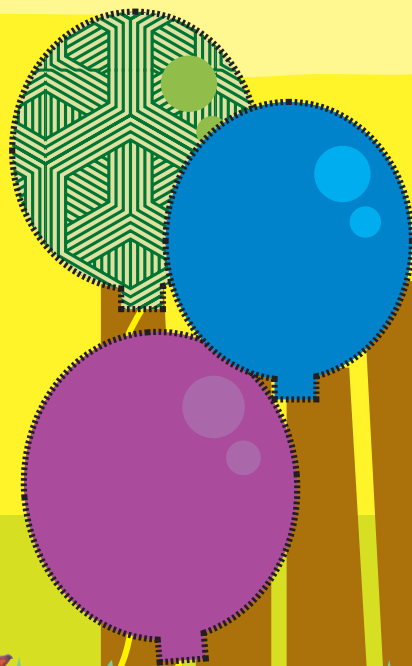


**Hello
Curly!**

**Hello
Dixie!**



I had my injections today.



Dixie and Curly came too!



**The doctor and the nurse told us it is
important to have our injections
when they are due.**

Immunisation Schedule

- ☐ 2 months
- ☐ 4 months
- ☐ 6 months
- ☐ 12 months
- ☐ 18 months
- ☐ 4 years



Doctor said

**Well done
Lulu!**

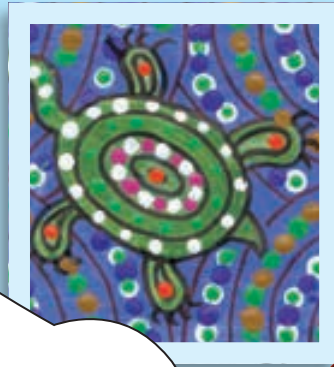
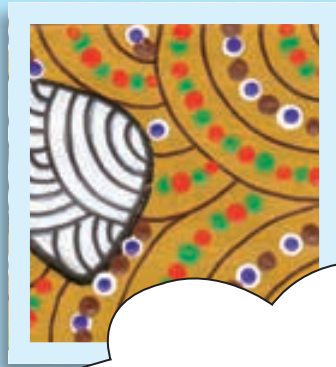


Nurse said

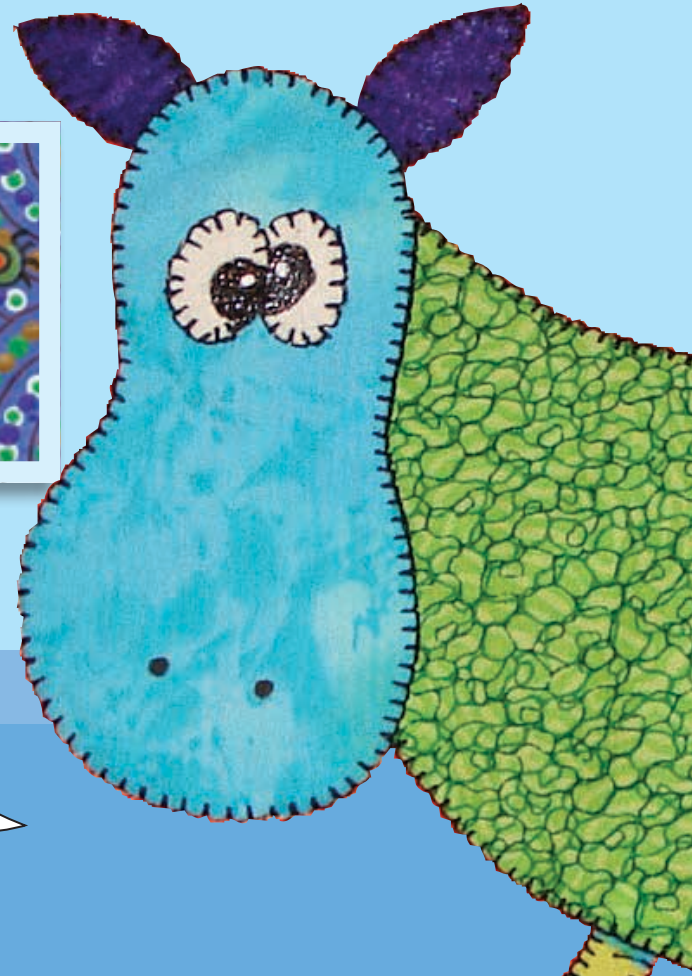
**Well done
Lulu!**



Dixie said



**Well done
Lulu!**



And Curly said

**Well done
Lulu!**



**Dixie and Curly said they
will have their injections too,**



when they are due.

Immunisation Schedule

- ☐ 2 months
- ☐ 4 months
- ☐ 6 months
- ☐ 12 months
- ☐ 18 months
- ☐ 4 years



I said

**Well done
Dixie
and Curly!**



Today was a good day!



The “Lulu” series was commissioned and developed by the Riverland Division of General Practice as part of health awareness and health promotion strategies for the Riverland community.

This instalment, *“Lulu Dixie and Curly have a Good Day”* is proudly sponsored by Adelaide PHN (www.adelaidephn.com.au) and Country SA PHN (www.countrysaphn.com.au) and is a reminder for parents of the importance of vaccinating their children according to the immunisation schedule.

The scheduling points in this booklet are correct for 2016. Immunisation programs change periodically so please check with your immunisation provider.

For more information about immunisation please ask your GP or visit the Immunise Australia website at www.immunise.health.gov.au or call the Immunise Australia toll free information line 1800 671 811.





www.riverlandgp.org.au

The "Lulu" series, commissioned and developed by the Riverland Division of General Practice, was written and designed by mudge.miatke advertising Loxton SA. The Riverland Division of General Practice acknowledges the financial contributions of the Department of Health and Ageing. Original Aboriginal artwork was created by Riverland artist Shane Karpany. All rights reserved. No part of this publication may be reproduced in any form without the prior written permission of Wendy Mudge & Associates, Loxton SA and the Riverland Division of General Practice.